



 **LIFECHURCH**

On the move to fulfill the vision



Vision: Where It All Began

The Sea of Humanity Vision

In March of 1979, the Lord gave me a vision in which I saw a “sea of humanity.” You couldn’t number the people by counting them. I saw myself standing before this multitude, teaching the Gospel with my Bible in my hand. As I was doing this, I saw people in wheelchairs and on stretchers in the aisles, which I knew represented people with desperate needs (physical, mental, spiritual, emotional, and financial). As I taught, I saw people get out of their chairs and go to minister to all those desperate people. The power of God touched them through these willing and obedient people, and those who were in these desperate situations got up and came out healed and restored. People were being miraculously healed by the power of God *through the touch of the body of believers*. **What I was doing was leading them and teaching the body.**

God spoke to me and said: “If you will be faithful and obedient, all you see will come to pass.” I knew that the Lord was telling me He would raise up a mighty army, a mighty body of believers, who would touch the city... the nation...and the world.

At the end of the vision, the Lord told me to move to Saint Louis, where He would raise up what I had seen. Then, in June of 1980, with 19 people, Life Christian Church was born.

The Ball of Fire Vision

In 1980, about six-months after the church began, I received another vision while driving my car. I saw a big ball of bright fire—so bright it was like the sun. This ball of fire began to spin and gain momentum as it got bigger and bigger. The fast-spinning ball of fire began to hurl off smaller balls of fire all over Saint Louis and it’s outlying areas, even throughout the two-state area of Missouri and Illinois.

The Lord spoke to me again that day and said, “What you see here is Life Christian Church being raised up (we had about thirty people at the time). It is going to be like this ball of fire and light that grows and spins faster. As it does, it’s going to hurl off the little balls of fire, and Life is going to sprout locations here, there, and everywhere. It’s going to begin to increase in its magnitude and scope and impact, but all of it will be one big fire...one great expression of God’s love through His people.”



“And I am convinced and sure of this very thing, that He Who began a good work in you will continue until the day of Jesus Christ [right up to the time of His return], developing [that good work] and perfecting and bringing it to full completion in you.”
– **Philippians 1:6 (AMP)**

Reflections

Some time ago, I was reflecting on all the seasons we have been through as a church family. My mind began to focus on where we were presently and where I see us going in the future. I prayerfully contemplated how it might come to pass that we, as a church, would fulfill the original vision that the Lord gave me back in March of 1979.

During this time of reflection, I had my first inkling that it may take big changes to reignite our passion for doing the work God originally called us to do. It would require us to get out of our comfort zones. I knew it was time for us to look, with new eyes, at how we

are doing everything. We would have to decide if we are doing each type of ministry in a particular way because it is familiar and comfortable, or are we doing them in a way that is most effective for God's kingdom? It is time to operate out of renewed faith, not old, comfortable habits.

God began to plant fresh ideas in my mind through this prayerful thought process. One thought which came to mind over and over was to move our church to a new location. This was a huge thought, and one I gave much prayer to without speaking of it to anyone.

Prophetic Confirmations

Obviously, changing locations was an undertaking that could not be done without special consideration, a lot of Godly counsel, and, above all, lots of prayer. So, I quietly prayed over this idea, seeking God's divine wisdom and discernment. Then, in April 2010, He prophetically confirmed, through Jim Laffoon, the Word He had given me to change locations. Having no knowledge of the changes I was contemplating, Jim said, *"Rick, I feel like the Lord is speaking to me that this building represents where you have been...not where you're headed. It speaks of your past, not your future."* Those words were my thoughts exactly.

In June of the same year, Perry Stone casually spoke to me during worship, *"You're going to sell this building. I see you moving into a different facility."* He had no idea we were even contemplating such a thing.

These two confirmations from the Lord are what helped me to set up our "30 Days of Prayer" last August, when I asked the entire congregation to corporately call upon the Lord, seeking clear direction as to what we should do in going forward and concerning relocating our church campus.

On Sunday, October 31, 2010, Cathy Lechner, whom God has used many times over the years to encourage us with prophetic words, gave us a prophecy during her message about a *"young David, over the hill, who would occupy this building."* Again, she knew nothing about all the months of prayer we had just spent, asking the Lord to make sure we were following His plan and purpose for our future.

A Season of Repositioning

With peace in my heart about the prospective move, amazingly, God immediately began to provide us with potential buyers for our campus.

Meanwhile, we prayerfully considered multiple buildings, properties, and churches to find the one best suited to accomplish all that God was speaking to us to do. As we concluded our search, we could see God's mighty hand in the mix of it all, leading us securely every step of the way. Only He can so flawlessly align people and timing and purposes to come together in such perfection and unity of heart and spirit.

Everything we are doing right now is to prepare us for the fulfilling of God's vision for our church. If we wanted to stay right where we are and live a "status quo" existence, we could do that. But the status quo life is never God's best. Knowing that, we are excited to be repositioning all of our resources toward *focusing on the real needs of the people in our community—and the world.*

A congregation that has been around for as long as we have must sometimes be reminded of this fact—***our church is not made of two-by-fours and drywall. Life Christian Church is made of people who love the Lord***



and want to serve Him to the utmost of their abilities. We are not bound by sentimental desires to hold on to earthly treasures; instead, ***we are trading past blessings for fresh fire.*** We will always be the church God called us to be as long as we remain flexible to bend where He wills, even if it means letting go of things that we have held so dear to our hearts for many, many years.

One of the most awesome by-products of this new season is that we will be debt-free. Now, instead of paying a monthly mortgage and investing in the upkeep of the beautiful campus we have been blessed with, we will now be able to invest more of our time, money, and energies into the beautiful people in this world who are sick, hurting, or lost without Christ—fulfilling the vision.

This move is all about retooling our strategy in order to freely do all that God has purposed our hearts to do...completely unencumbered by unnecessary attachments to carnal things.

“Forget the former things; do not dwell on the past. See, I am doing a new thing! Now it springs up; do you not perceive it? I am making a way in the desert and streams in the wasteland.”

– Isaiah 43:18-19 (NIV)

The Bigger Picture

I realize it may seem to have been a long time in the making, but we are finally at the point where we can announce, with great excitement and expectation, that we have officially signed a contract, and we are now in the planning stages of the move to our new location!

The new location, formerly Faith Church, is just off Highway 44 at 1416 Larkin Williams Road in Fenton, MO. It's an awesome site that sits on 9 usable acres (which compares nicely to the 13 usable acres we have at our current location).

If you happen to see it before we get there, you should be aware that renovations are already in the making. Currently, a new children's area is being constructed, and we have plans drawn up to immediately add an expansive atrium lobby to the front of the building. As we progress with these plans, the campus will look quite different than it does presently.

Admittedly, some people may see our new location and facilities and possibly feel we've gone backwards. However, we do not believe this at all!!! In fact, this move sets us up for some awesome growth opportunities that have not been possible up to this time.

In March 2011, Jim Laffoon prophesied to a man in our congregation. **It was a Word to our church.** It spoke of how it may *seem*, in the natural, that we are moving in a backward motion, but we're not. **Our movement is comparable to how one draws back the bowstring on a bow, which sets the momentum in place for an explosive propulsion forward when the string is released.**

Rest assured, our new campus is sufficient for all our current needs, as well as our future plan. As the "bow string" is released, it is for us to expand outwardly, in a multi-campus fashion, as shown to me in the 1980 "Ball of Fire" vision.

Artist's rendering of the new children's area*

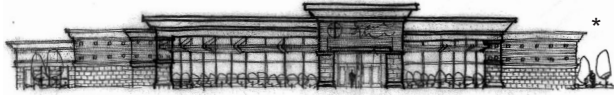


Time Line

Below is the initial time line for our move. Keep in mind, we are in the beginning stages of this process, and many items will likely be tweaked along the way, as necessary.

	Target Dates	Action Items
	<ul style="list-style-type: none">Monday, July 11, 2011Sunday, July 17, 2011	<ul style="list-style-type: none">Official closing date of the saleFirst service at the new campus
	<ul style="list-style-type: none">Three to six months after taking ownership of the new campus	<ul style="list-style-type: none">Complete construction on the new atrium lobby
	<ul style="list-style-type: none">One to two years	<ul style="list-style-type: none">Begin services at a second location

FAQs



Q When are we moving?

A Our move will begin the week of Monday, July 11. Our first service in the new building will be the following Sunday, July 17.

Q Why are we moving?

A God has called us to move to fulfill our vision (see the details within this handout).

Q Where are we moving?

A Our new campus is approximately five miles north of our current location at: 1416 Larkin Williams Road (formerly Faith Church) in Fenton, MO.

Q How do I get there?

A From Highway 44:
West-bound on 44, take the Bowles Avenue exit. Make a left onto Bowles and another left onto Horan Drive.
Turn right onto Larkin Williams Road (the church is on the left).
East-bound on 44, take the Bowles Avenue exit, and turn right on Bowles Avenue.
Make a left onto Horan Drive.
Turn right onto Larkin Williams Road (the church is on the left).

From Highway 141:

Take Highway 141 to Bowles Avenue and turn right.
Make a right onto Horan Drive.
Turn right onto Larkin Williams Road (the church is on the left).

Q What are the service times going to be?

A We will immediately go to two Sunday morning services (9:00 a.m. and 11:00 a.m.), and our Tuesday night service will remain at 7:00 p.m.

Q What does the campus consist of?

A The new campus has nine acres, a church building, a ministry center for our offices (across the street), and two “houses” that will be used for ministry purposes.

Q What are the new renovations going to entail?

A A brand new children’s section is already in the process of being built at the site. Shortly after we move in, we will also begin construction on an expansive atrium lobby that will extend out, across one entire side of the building.

(Q&A continued on back)

Q Why are we changing our name and logo to LIFECHURCH?

A We are dropping “Christian” in the name because many people confuse our church as belonging to a denomination with that name—”Christian Church.” Also, we feel the shorter name readily identifies who we are and what we are all about. It is in keeping with the scripture God gave me in the beginning, when we first adopted our name, *“In him was life, and that life was the light of all mankind.”* – **John 1:4**

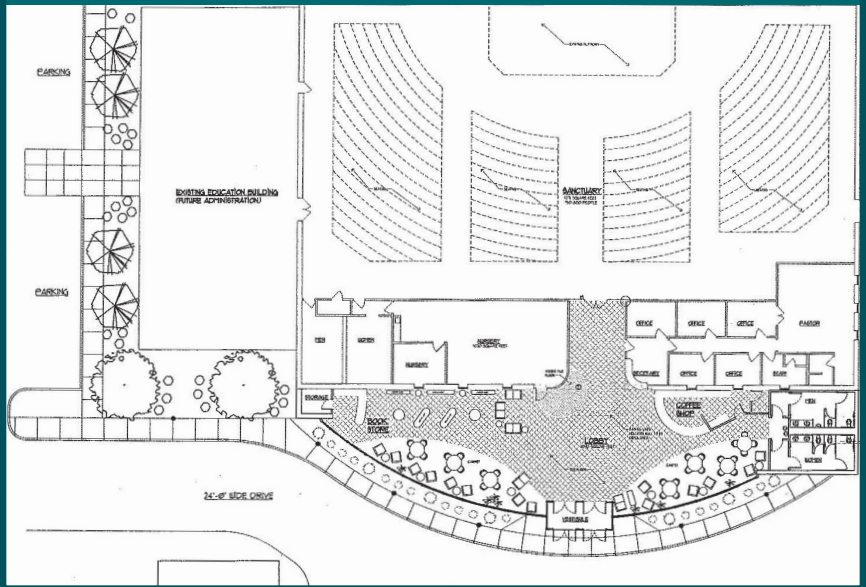
Q Will there be enough rooms for all the ministry we now conduct?

A The new campus has ample multipurpose space in which to conduct the various ministries of the church.

Q What if I have questions that aren’t answered in this booklet?

A Additional questions about the move can be e-mailed to LIFEonthemove@lccstaff.org.

Architect’s blueprint of the new atrium lobby*



EXIT TO SERVE



LIFECHURCH

Graphics marked with an asterisk have been provided by architects at Archimages.

